

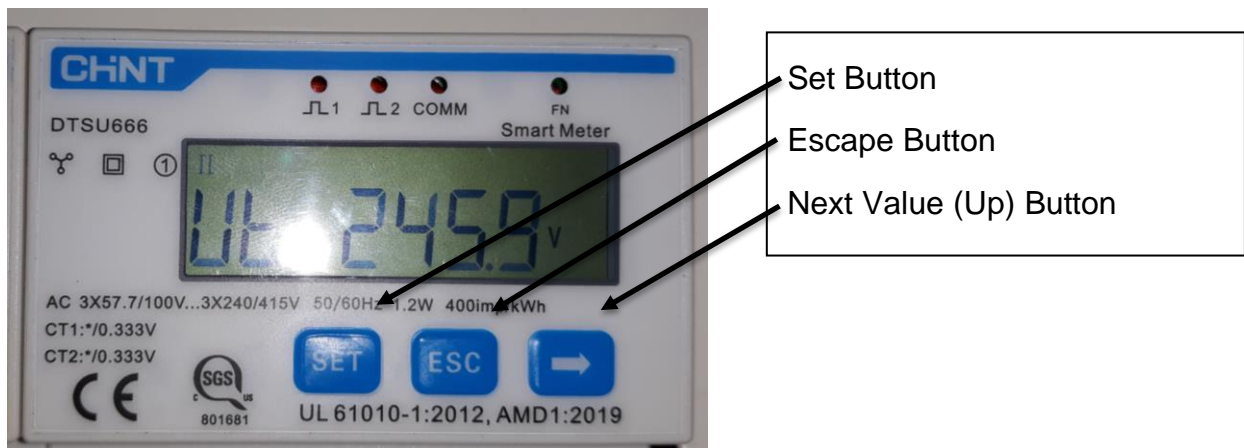
DTSU666-20 Program for 250A Current Transformers

Disclaimer

The material in this document has been prepared by Sungrow Australia Group Pty. Ltd. ABN 76 168 258 679 and is intended as a guideline to assist solar installers for troubleshooting. It is not a statement or advice on any of the Electrical or Solar Industry standards or guidelines. Please observe all OH&S regulations when working on Sungrow equipment.

Overview:

The Sungrow DTSU666-20 is pre-programmed for 100/333mV Current transformers. If 250 Amp transformers are required, please use the following sequence.



Button (press)	Display
Set	CODE
Set	60_
Next Value (Up)	60 <u>1</u>
Set	6 <u>0</u> 1
Set	<u>6</u> 01
Next Value (Up)	<u>7</u> 01

Set	<u>0701</u>
Set	<u>Ct.01</u>
Next Value (Up)	<u>Ct.02</u>
Set	<u>Ct</u>
Esc x 2	<u>Normal display</u>

If the issue still persists, please take photos testing on site and contact Sungrow Service Department on 1800 786 476 or email to service@sungrowpower.com.au.