

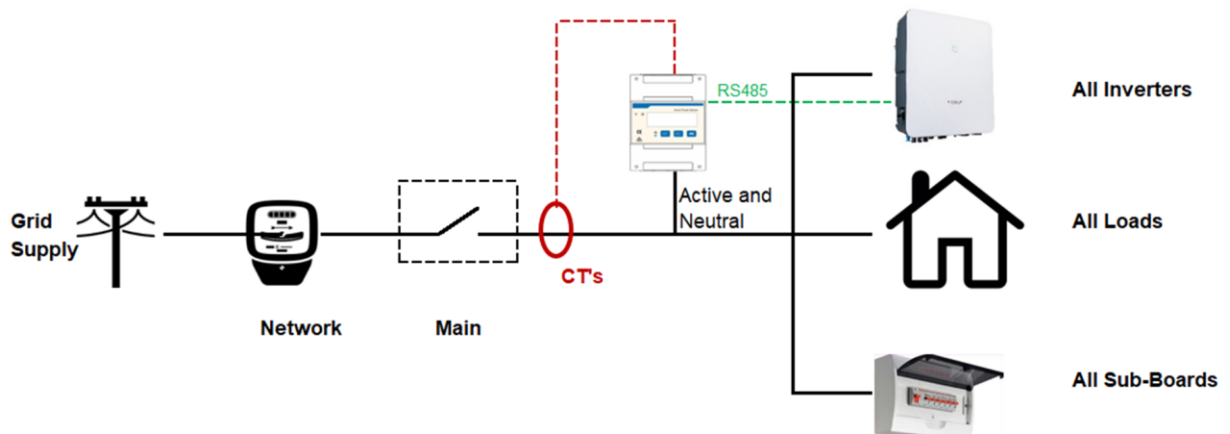
DTSU666-20 Install checklist V2

Disclaimer

The material in this document has been prepared by Sungrow Australia Group Pty. Ltd. ABN 76 168 258 679 and is intended as a guideline to assist solar installers for troubleshooting. It is not a statement or advice on any of the Electrical or Solar Industry standards or guidelines. Please observe all OH&S regulations when working on Sungrow equipment.

Check 1:

Is the meter in the correct location i.e. the CT(s) are placed between the main switch, and all loads/Inverters?



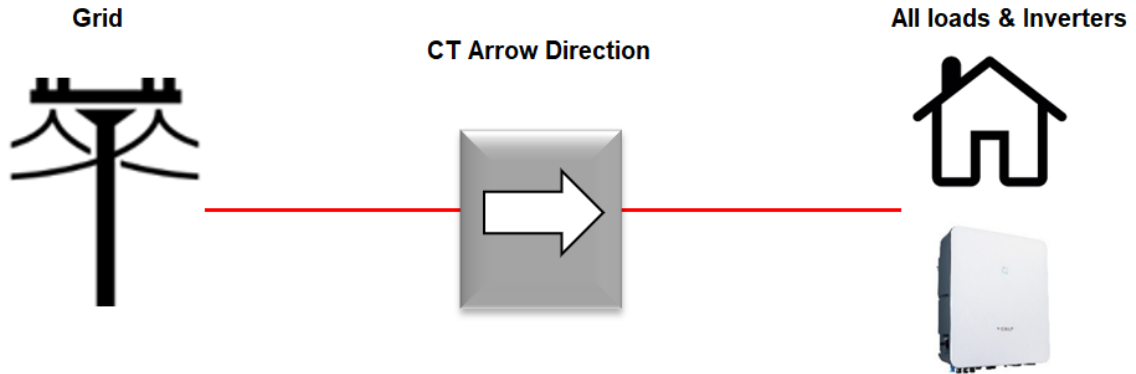
Check 2:

Have you used the correct CT's with the correct secondary of 0.333V/333mV?



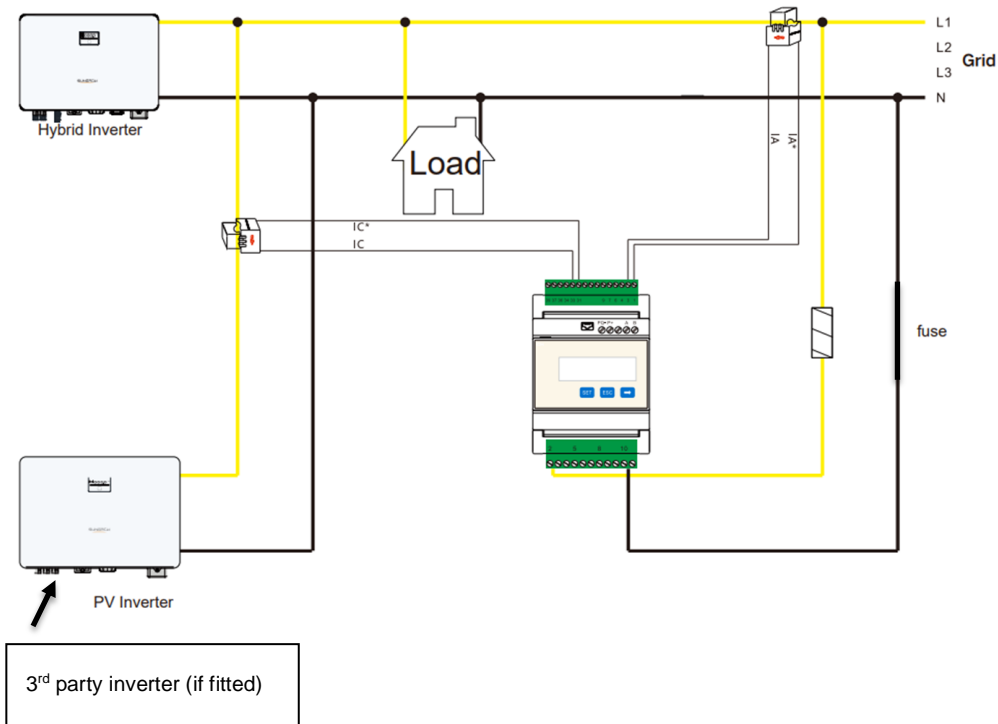
Check 3:

Is/are the arrow(s) on the CT(s) pointing from grid towards loads/inverters?



Check 4:

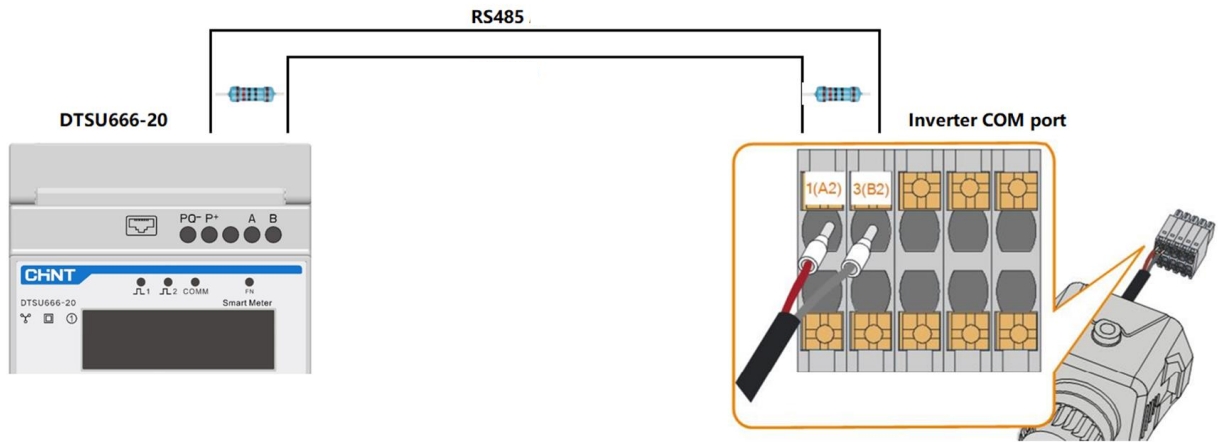
For Single-Phase, is the voltage and CT(s) connected to Phase A?



Check 5:

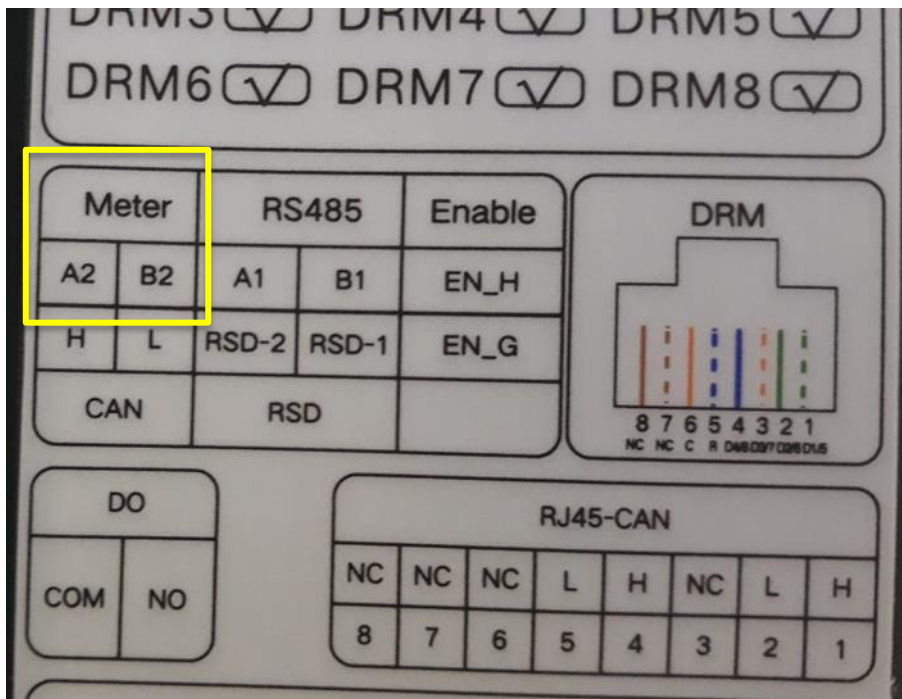
Has the correct RS485 cable (Shielded Twisted Pair) been used?

Have the 120 Ohm resistors been connected across RS485A and RS485B at each end of the communication cable?



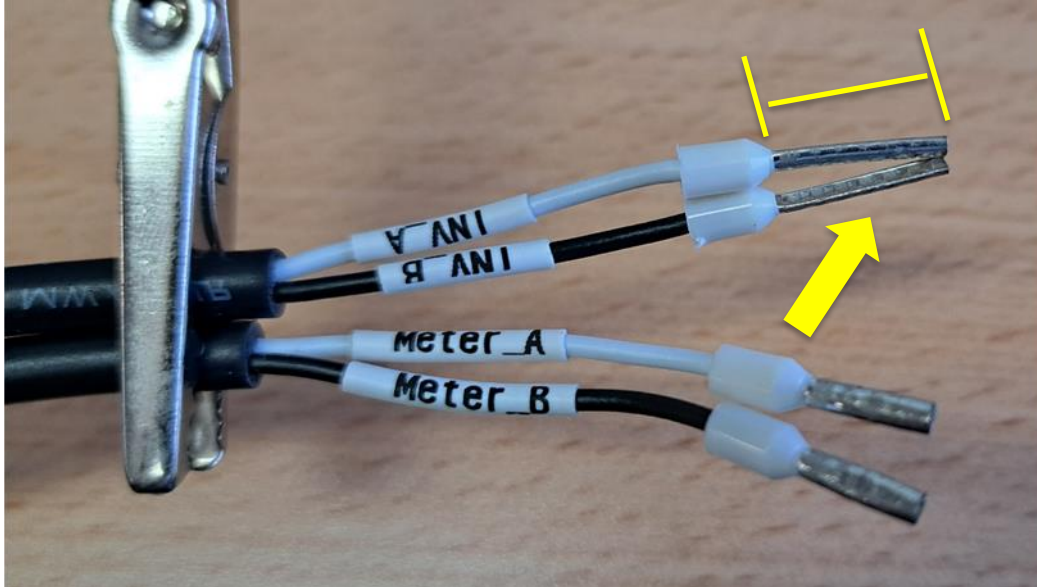
Check 6:

Has the RS485 cable been connected to the correct A2/B2 terminals at the inverter com plug, in accordance with the pinout table on the side of the inverter?



Check 7:

Has the correct bootlace ferrules with the longer pins been used at the inverter com plug (The standard length won't make a connection)?



Check 6:

The defaults are the correct settings and the meter is plug and play. If you have changed any settings i.e. Address or CT ratio etc, the meter won't communicate



If the issue still persists, please take photos testing on site and contact Sungrow Service Department on 1800 786 476 or email to service@sungrowpower.com.au.