

## DTSU666-20 Program for larger Current Transformers

**Disclaimer**

The material in this document has been prepared by Sungrow Australia Group Pty. Ltd. ABN 76 168 258 679 and is intended as a guideline to assist solar installers for troubleshooting. It is not a statement or advice on any of the Electrical or Solar Industry standards or guidelines. Please observe all OH&S regulations when working on Sungrow equipment.

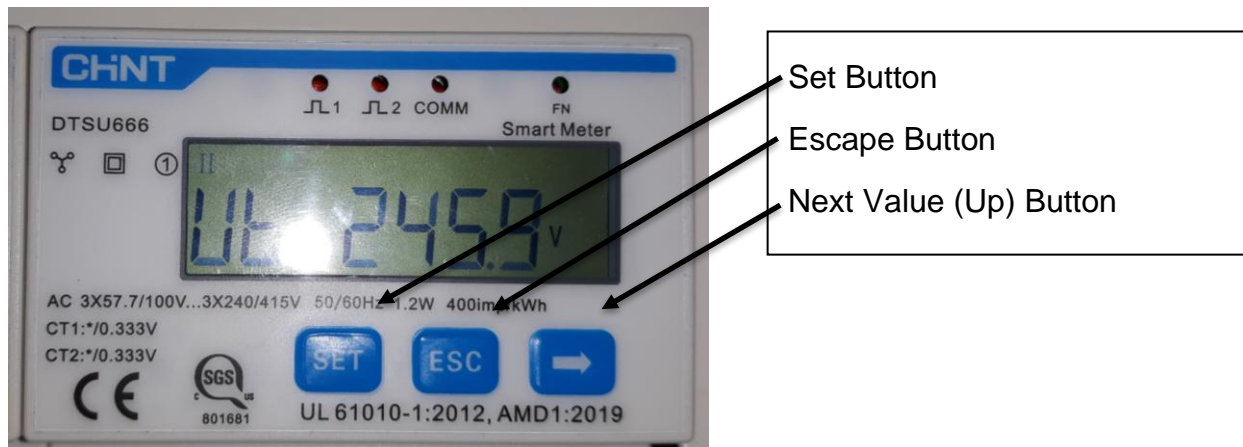
**Overview:**

The Sungrow DTSU666-20 is compatible with all Gen 3 and onwards Sungrow inverters and hybrids.

Default DTSU666-20 is pre-programmed for 100/333mV Current transformers.

If 250 Amp or larger (See Table 1) transformers are required, please use the following sequence.

All CT's must have a secondary rating of 333mV.



Button (press)	Display
<b>Set</b>	<b>CODE</b>
<b>Set</b>	<b>60_</b>

<b>Arrow Button</b>	<b>6<u>0</u>1</b>
<b>Set</b>	<b>6<u>0</u>1</b>
<b>Set</b>	<b><u>6</u>01</b>
<b>Arrow Button</b>	<b><u>7</u>01</b>
<b>Set</b>	<b><u>0</u>701</b>
<b>Set</b>	<b>Ct.01</b>
<b>Arrow Button</b>	<b>Ct.02 (or higher)</b>
<b>Set</b>	<b><u>C</u>t</b>
<b>Esc x 2</b>	<b>Normal display</b>

Table 1 – Programmed range of CT ratio's.

Parameter	Value range	Description
<b>Ct</b>	1 ~ 88	1: CT01:100A/333mV; 2: CT02:250A/333mV; 3: CT03:400A/333mV; 4: CT04:500A/333mV; 5: RS01:1000A/333mV; 6: RS02:2000A/333mV; 7: RS03:3000A/333mV; 8: RS04:4000A/333mV;

If the issue still persists, please take photos testing on site and contact Sungrow Service Department on 1800 786 476 or email to [service@sungrowpower.com.au](mailto:service@sungrowpower.com.au).