

The SUNGROW logo is displayed in a bold, orange, sans-serif font. The background of the slide features a series of white, glowing hexagonal outlines that create a sense of depth and perspective, receding towards the center.

**SUNGROW**

Clean power for all

# SUNGROW POWER SUPPLY CO., LTD.

iSolarCloud Overview Training

Presenter – Jeet Singh Sethi

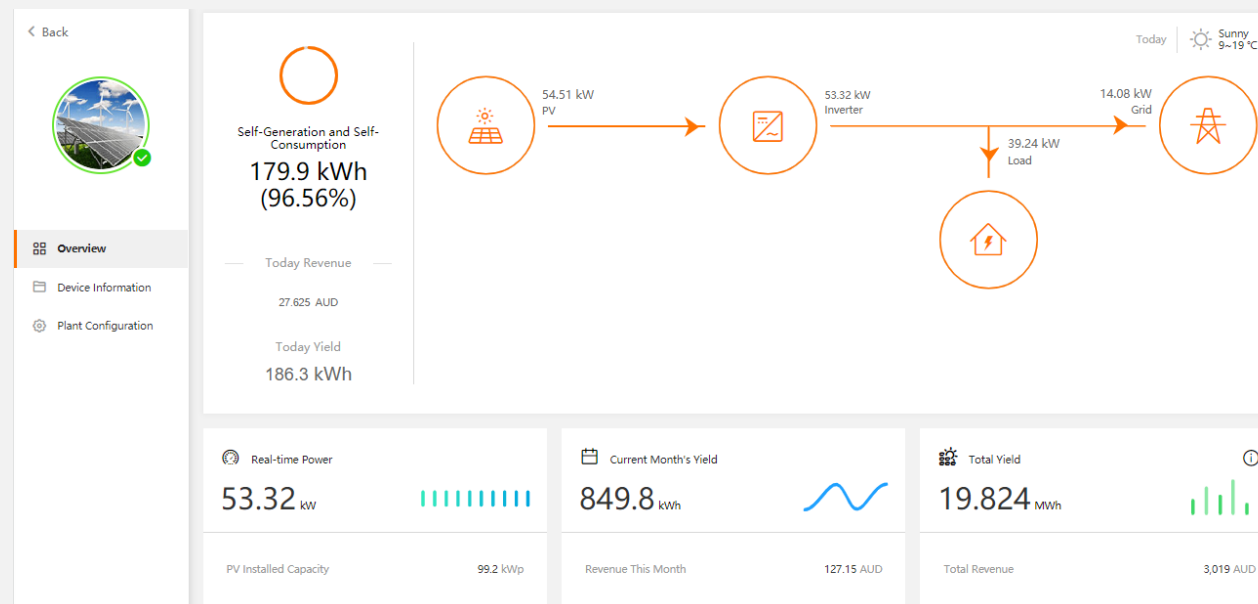
## Disclaimer

*The material in this document has been prepared by Sungrow Australia Group Pty. Ltd. ABN 76 168 258 679 and is intended as a guideline to assist solar installers for troubleshooting. It is not a statement or advice on any of the Electrical or Solar Industry standards or guidelines. Please observe all OH&S regulations when working on Sungrow equipment.*

# iSolarCloud - Introduction

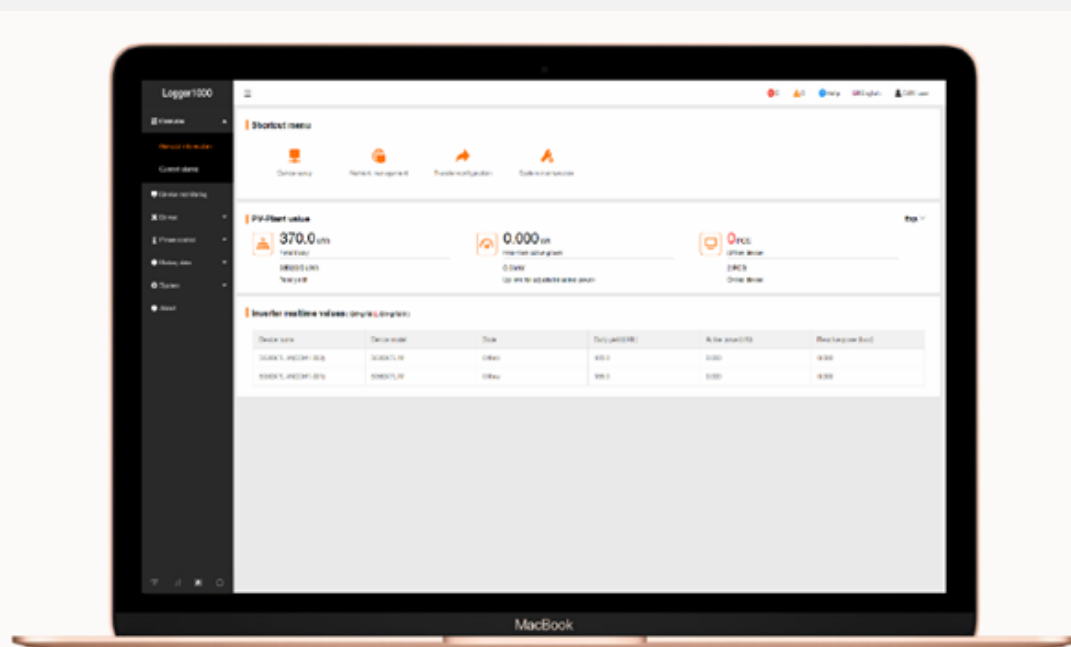


- iSolarCloud was introduced in 2019 to replace the older Solarinfo Bank, and to replace multiple Apps with one App.
- It is a web / app based datalogging and reporting system, developed by Sungrow that gives owner access to their systems production.
- It has been designed to be utilised as a tool for retailers and installers to be able to manage their customer's PV systems more effectively.

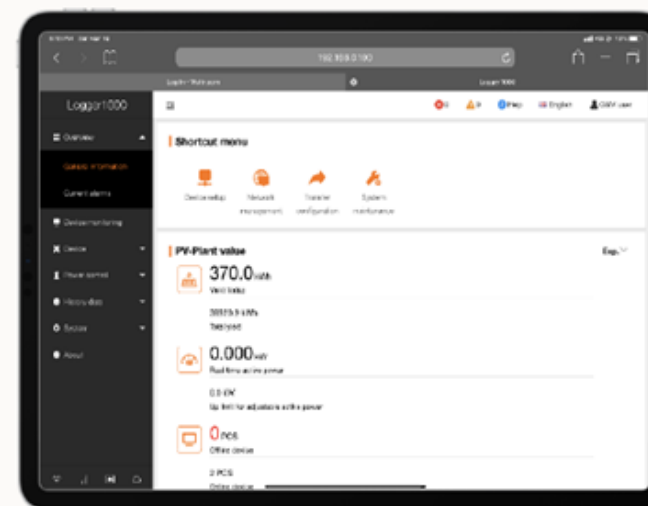


iSolarCloud available on desktop, tablet or smart phone

- Desktop - [www.isolarcloud.com](http://www.isolarcloud.com)
- Tablet or Smart Phone – Via the APP



PC



iPad



Smart Phone

HQ

Country/Region

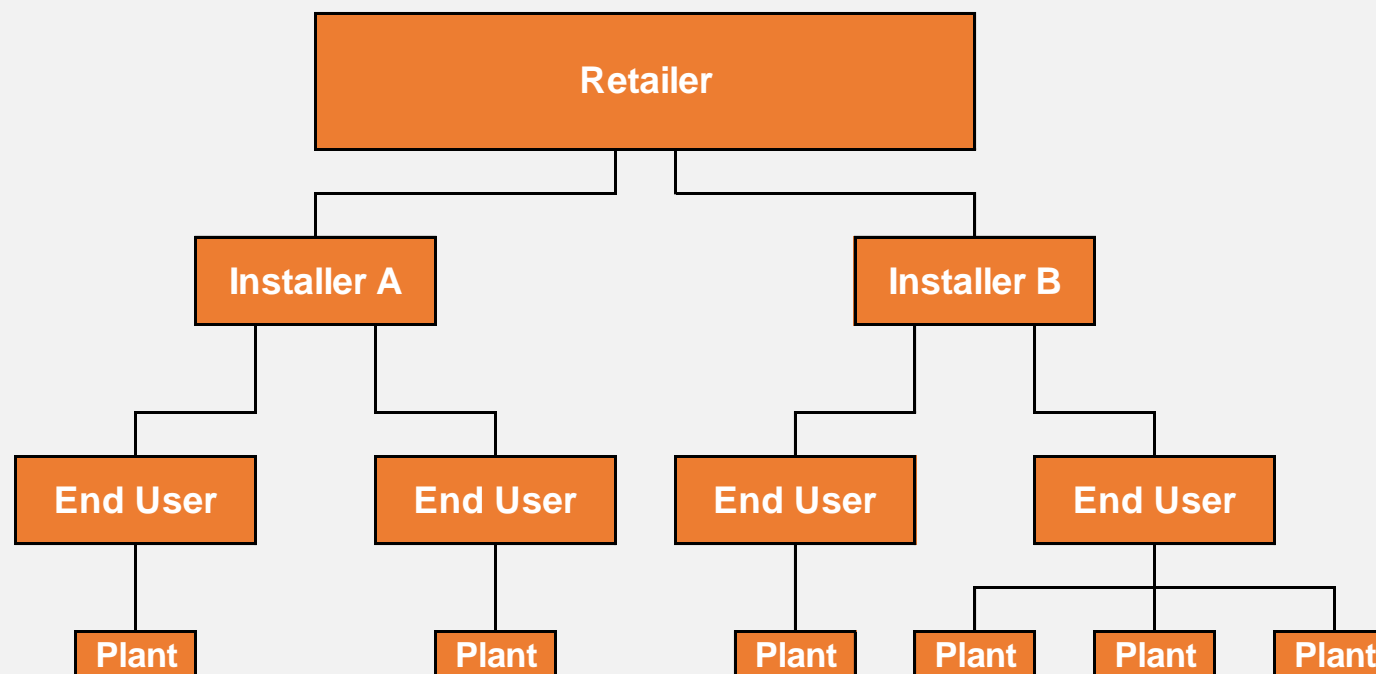
Installer

End User

Plant

Hierarchy of design allows retailers and installers to manage plants

**SUNGROW**



iSolarCloud gives access to production information, inverter data, consumption data and much more

SG110CX(COM1-001)\_001\_002

Plant Name:

Device Interval:

Device Model: SG110CX

General Information

Active Fault

Closed Fault

Chart

Measuring Point Parameter

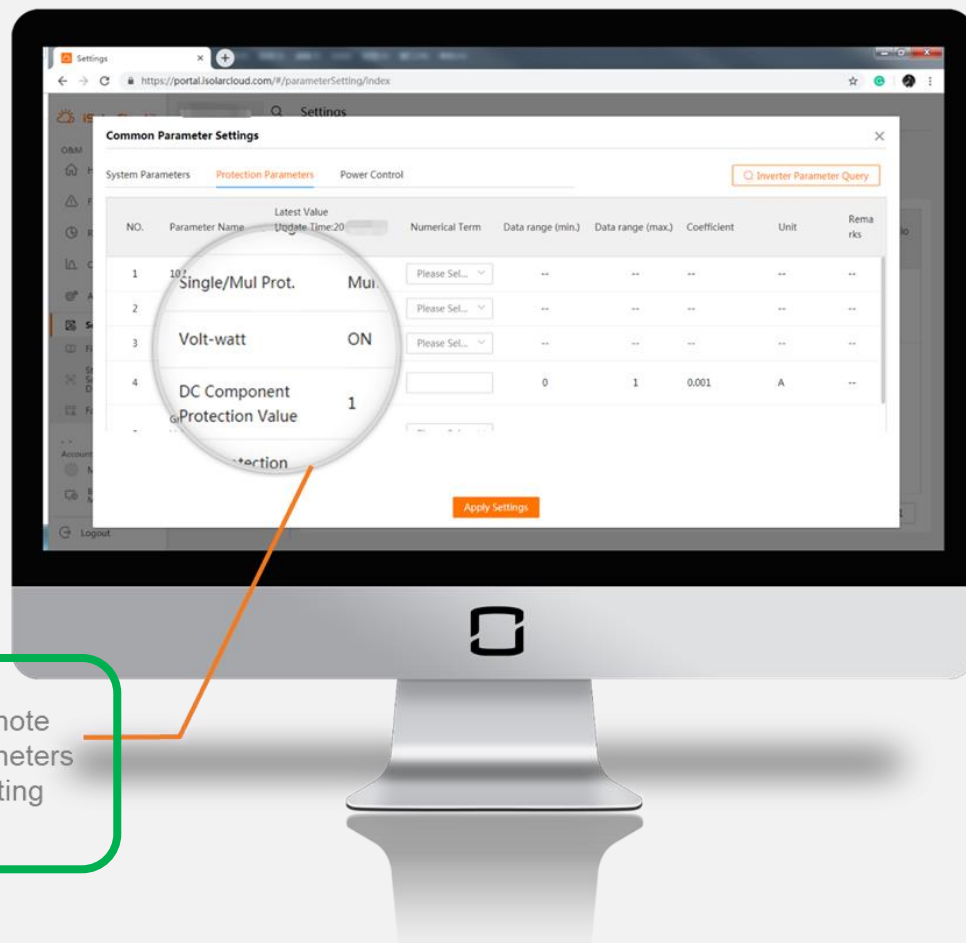
Data Update Time: 2020-07-03 12:45

Other Information

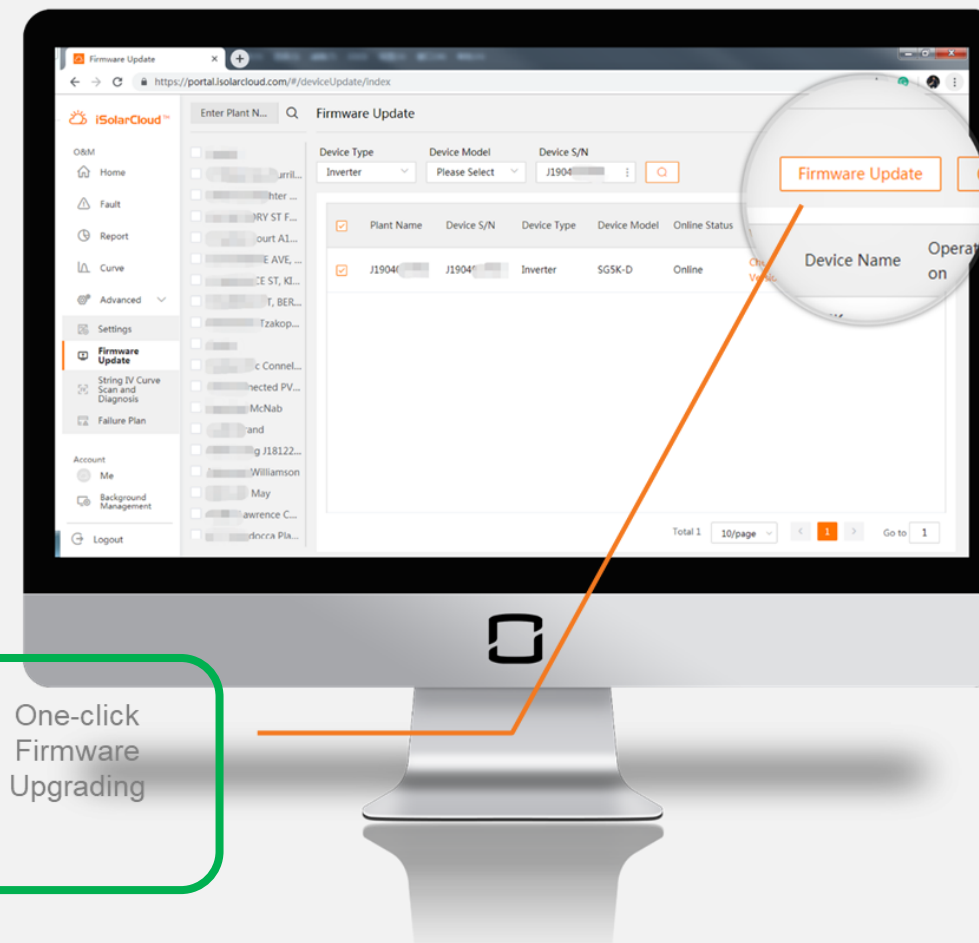
Daily Yield	195.3 kWh		Total Active Power	53.14 kW		Total Yield	19.83 MWh		Total DC Power	53.95 kW	
Phase A Voltage	244.8 V		Phase B Voltage	246.4 V		Phase C Voltage	245.6 V		Phase A Current	71.9 A	
Phase B Current	71.8 A		Phase C Current	72.1 A		Total Reactive Power	-0.06 kVar		Total Power Factor	1	
Grid Frequency	50.06 Hz		Internal Air Temperature	41.1 °C		MPPT1 Voltage	661.4 V		MPPT1 Current	11.5 A	
MPPT2 Voltage	683.6 V		MPPT2 Current	12.8 A		MPPT3 Voltage	685.1 V		MPPT3 Current	12.5 A	
MPPT4 Voltage	687.5 V		MPPT4 Current	12.3 A		MPPT5 Voltage	675.6 V		MPPT5 Current	12.7 A	
MPPT6 Voltage	673.1 V		MPPT6 Current	12.6 A		MPPT7 Voltage	672.9 V		MPPT7 Current	6.2 A	
MPPT8 Voltage	191.5 V		MPPT8 Current	0 A		MPPT9 Voltage	190.4 V		MPPT9 Current	0 A	

Repair

## Firmware updates and parameter settings from your desktop



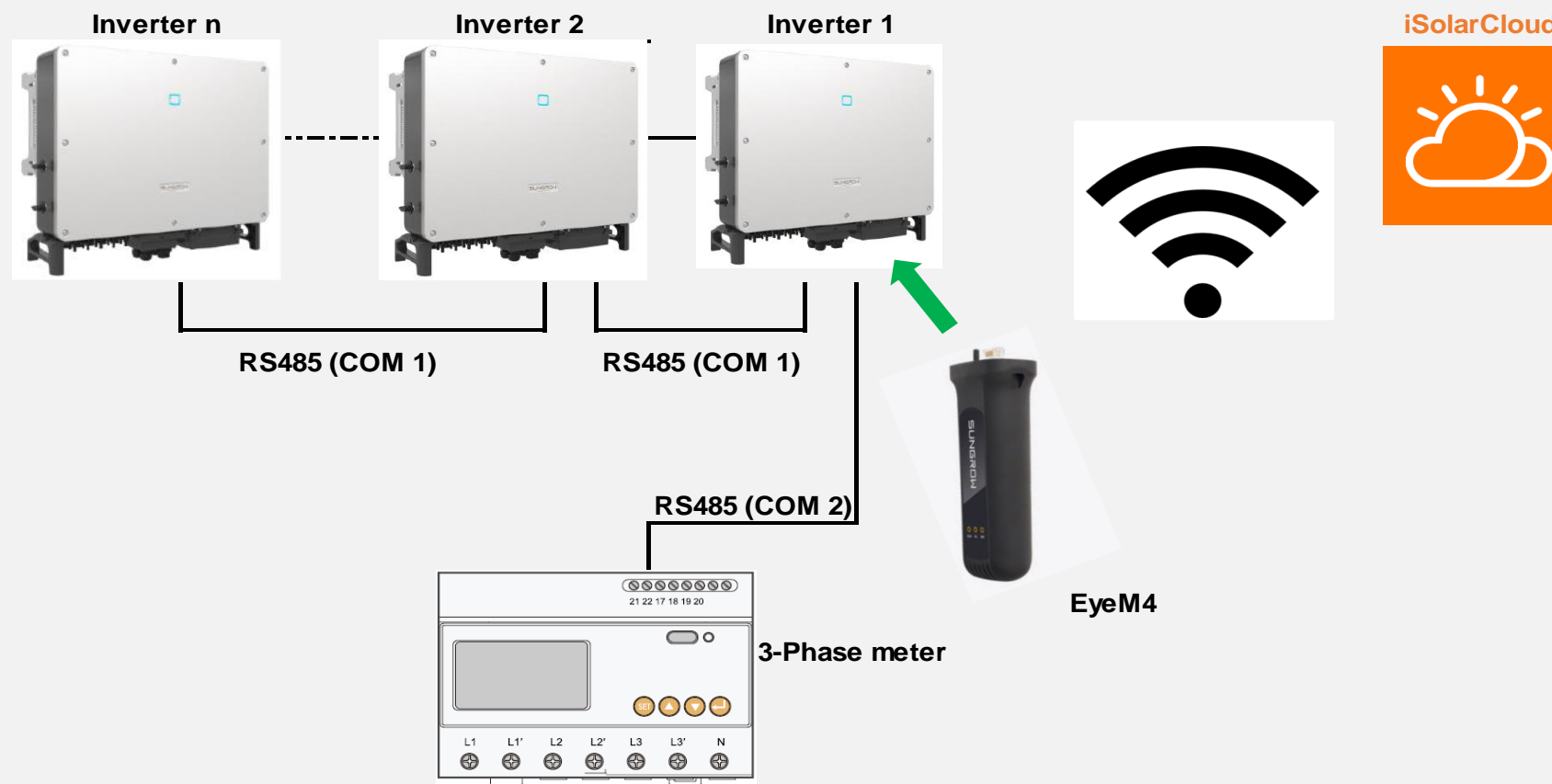
Remote  
Parameters  
Setting



One-click  
Firmware  
Upgrading

## EyeM4 iSolarCloud Connection

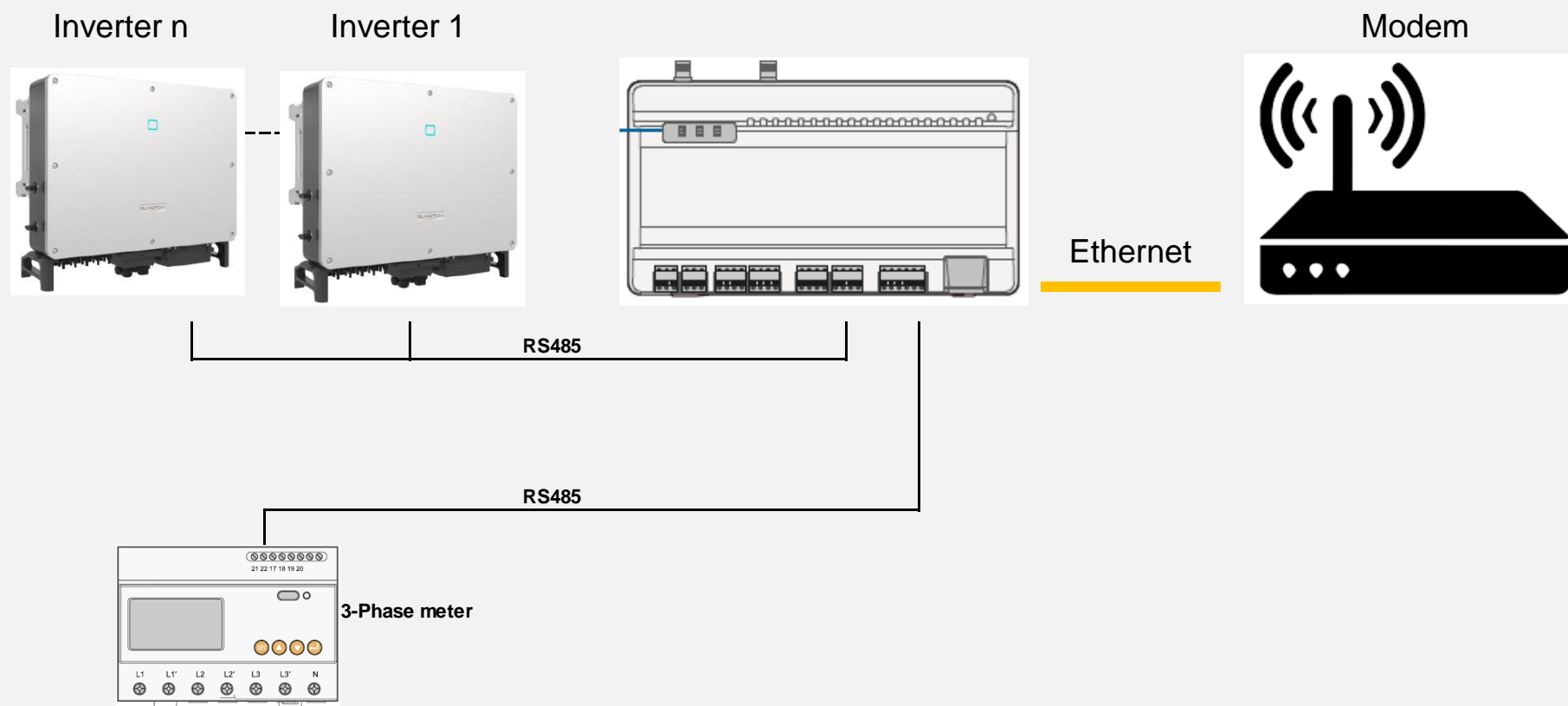
Uploads data to the iSolarCloud portal via the customer's modem through WLAN connection.





# Logger1000 iSolarCloud Connection

Uploads data to the iSolarCloud portal via the customer's modem through Ethernet connection.



## Quick iSolarCloud Demo



## Further Information



For further information and videos, please visit our service web site

<https://service.sungrowpower.com.au/>

You may also reach tech support via:

Email: [service@sungrowpower.com.au](mailto:service@sungrowpower.com.au)

Hotline: 1800 786 476 (business hours)

# AU Team

*Thank you*

□ 2012

Founded in

□ 15+

Lovely Members

□ 500MW

Being Installed in AU



THANK YOU!