

# Sungrow with Solar Analytics commissioning guide



# How it works.



Sungrow  
consumption meter.

Single or 3 phase.

Sungrow inverter.

Communications  
via Ethernet, WiFi or  
4G. (coming soon)

5 year subscriptions much cheaper &  
margin built in. On sites < 15kW:

**Wholesale:** \$125 (inc GST)  
**Recommended Retail:** \$165 (inc GST)

# How to commission a Sungrow with Solar Analytics site.

Step 1 - Create New Plant in iSolarCloud.

Step 2 - Share Plant with Solar Analytics.

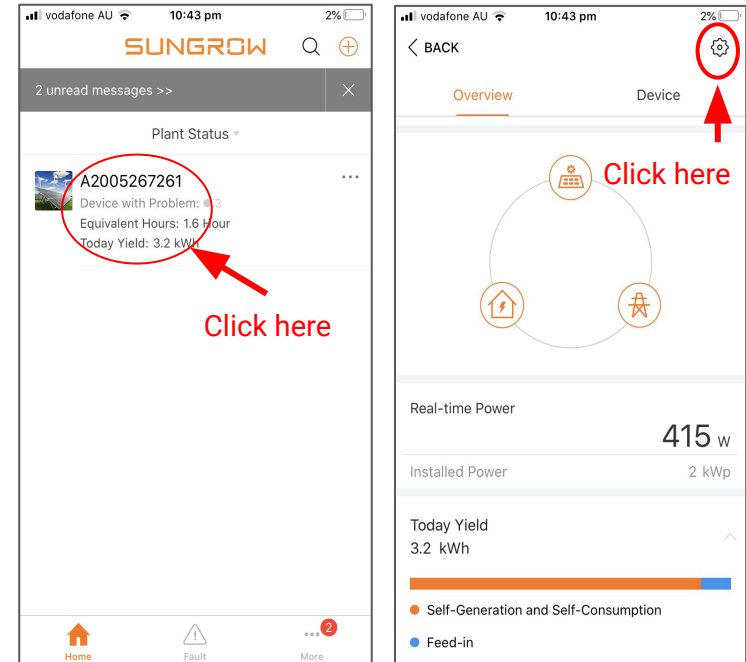
Step 3 - Select Solar Analytics as Partner.

Step 4 - Commission the site in Solar Analytics.

Step 5 - Complete commissioning.

# Step 1 - Create New Plant in iSolarCloud

- Login to the iSolarCloud dashboard.
- Register PV, inverter, consumption meter and site details on iSolarCloud.
- Once complete, click on the plant and open the options cog.



# Step 2 - Share Plant with Solar Analytics

- Select 'Plant'
- Select 'Channel/Partner'
- Select '+ Add' to add a new Channel/Partner (one time requirement only)

The image displays three sequential screenshots from a mobile application, illustrating the process of sharing a plant with Solar Analytics. Each screenshot has a status bar at the top showing 'vodafone AU', signal strength, time (10:43 pm or 10:44 pm), and battery level (2%).

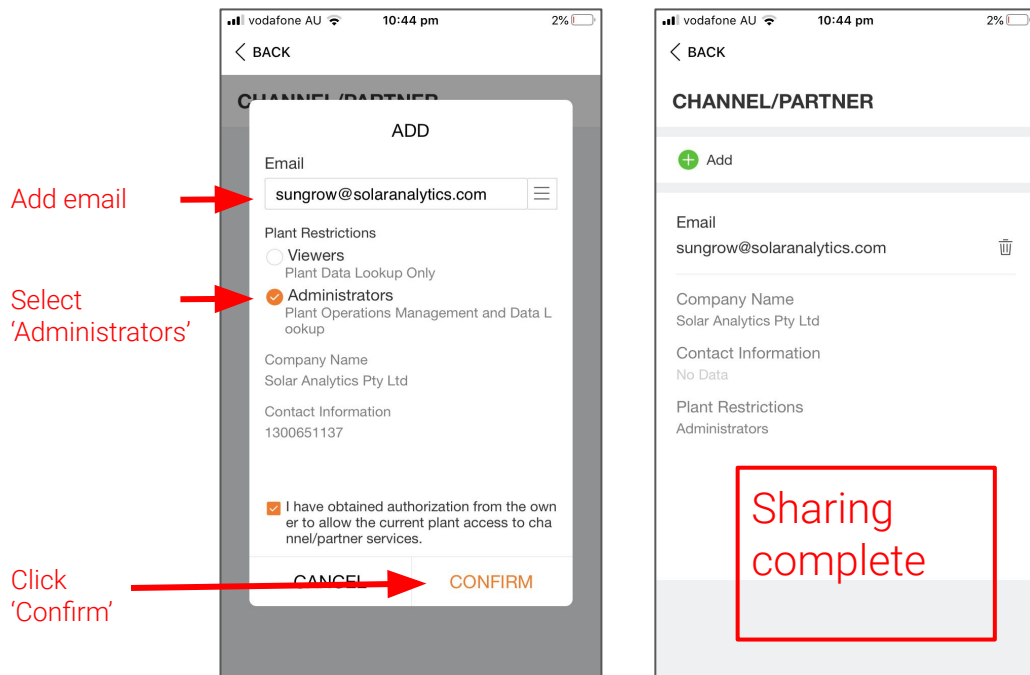
**First Screenshot: CONFIGURATION**  
The screen shows a list of configuration options: 'Plant', 'Device', 'Device Replacement', and 'Tariff'. A red arrow points to the 'Plant' option with the text 'Click here'.

**Second Screenshot: PLANT CONFIGURATION**  
This screen shows the details for the selected plant. Fields include: 'Plant Name' (A2005267261), 'Plant Type' (Residential PV), 'Owner's Email Address' (adrian@solaranalytics.com), 'Distributor/Installer Organization Code' (AUSS6PWE), and 'Service Provider: Solar Analytics PTY LTD' (Telephone: 0426046965, Email: installer\_sa@solaranalytics.com). At the bottom, there is a 'Channel/Partner' field and a large orange 'CONFIRM' button. A red arrow points to the 'Channel/Partner' field with the text 'Click here'.

**Third Screenshot: CHANNEL/PARTNER**  
This screen shows the 'CHANNEL/PARTNER' section. It displays a 'No Data' message with a warning icon. A red arrow points to an orange '+ Add' button with the text 'Click here'.

# Step 3 - Select Solar Analytics as Partner

- Add Solar Analytics' email address (sungrow@solaranalytics.com)
- Select 'Administrators' access
- Click 'Confirm'
- Ensure sharing is complete



# You're more than halfway there!

That's the Sungrow iSolarCloud component complete!

Now, on to the Solar Analytics portal to complete the job, you'll find the site in the 'Pending' tab of 'My Sites List' within 3 minutes.

# Step 4 - Commission the site in Solar Analytics

- In the 'My Sites List' tool, find the new site in the 'Pending' tab.
- Click 'Edit' and add site details.

Choose Pending

Click Edit

Find site

Add details

My Sites List

ACTIVE (23589) **PENDING (654)** INACTIVE (4607)

Search:  3 search results found

SITE NAME	SITE ID	OWNER SURNAME	CONFIGURATION STARTED	PROGRESS		
Sungrow: Cliff Cawley	251659		10 October 2020	80% Complete	<a href="#">EDIT</a>	<a href="#">DELETE</a>
Sungrow: Close	251352	Close	8 October 2020	80% Complete	<a href="#">EDIT</a>	<a href="#">DELETE</a>
Sungrow: Clayton and Amanda Evans	249039		28 September 2020	80% Complete	<a href="#">EDIT</a>	<a href="#">DELETE</a>

What do 'Good', 'Investigate' and 'Attention' mean?

[ADD NEW SITE](#)

20% 40% 60% 80% 100% [BACK TO MY SITES LIST](#)

Site Details

Fields marked with \* are required.

Site Name: \*

Site name will be used to name your dashboard.

Site Category: \*

Customer Account Number:

National Meter Identifier (NMI): \*

NMI has 10-11 digits (but may contain a few letters). Can be found on your electricity bill.

Is this a Solar for Rentals site?

Is only consumption monitored?

PV Installation Date: \*



# Step 5 - Complete commissioning

- Select 5 Year subscription
- Click 'Finish'

Select  
Subscription



Monitoring Hardware ⓘ

This site is a Sungrow with Solar Analytics integration.  
Installation of Solar Analytics monitoring hardware is not currently supported on this site.

Subscription

15kW and under Sungrow system pricing:  
Subscription price below is for 1 subscription (Maximum of 2 devices per subscription)

☒ **5 Year Solar Analytics Management**  
Upon commissioning, **\$125** will be charged to your account with Solar Analytics.  
Customer will be required to renew subscription after 5 years from commissioned day.

BACK NEXT

Install Check

ⓘ Install Check is disabled for this site.

ADD NEW DEVICE

Signal Check

Voltage Check

Load Check

Power Factor Check

Final Check

Click  
'Finish'



Site Registration Summary

Please confirm your details before completing the site registration. Once all information is correct, click **Finish** below.

Customer Details ✎

Site Details ✎

Solar Energy System ✎

Devices and Subscription ✎

Devices 1

Sungrow  
989624\_1\_1\_1

Subscription

5 Year Solar Analytics Management **\$125\***  
1x Sungrow subscription

BACK FINISH

# Congratulations!

Your Sungrow with Solar Analytics site is now live!

# Important notes.

- You must have an iSolarCloud fleet and a Solar Analytics fleet set up before you can proceed. The email addresses in these account logins **must be identical**.
- Your installers must login to iSolarCloud using these credentials, not their own iSolarCloud credentials.
- Installers and operational staff must be familiar with how to navigate and use iSolarCloud and Solar Analytics to avoid frustration.

# Installation restrictions.

- Sites will be rejected at the time of sharing with Solar Analytics if:
  - Any inverter is off-line
  - There is an active fault on the site energy meter
  - The site is not shared with Administrator privileges
- Currently the service does not support:
  - Hybrid and PV Inverter mixed on one site
  - Multiple hybrid inverters on one site
- 4G dongle only applicable to non hybrid inverters