

Remote Setting via iSolarCloud

Disclaimer

The material in this document has been prepared by Sungrow Australia Group Pty. Ltd. ABN 76 168 258 679 and is intended as a guideline to assist solar installers for troubleshooting. It is not a statement or advice on any of the Electrical or Solar Industry standards or guidelines. Please observe all OH&S regulations when working on Sungrow equipment.

Applicability: Sungrow Crystal G2 Series, Three Phase Residential and CX range, Single-Phase Hybrid Range (SH5K-20/30 only), Three-Phase Hybrid Range

Communication Device Requirements:

Table 1: Communication Device Requirements

Inverter Type	Communication Device
Single-Phase / Three-Phase Residential Range (Grid-Connect & Hybrid)	V25/V31 Wi-Fi Dongle / E-Net Dongle / Direct Ethernet (Hybrid)
Three-Phase Commercial Range	EyeM4, Logger1000

The new iSolarCloud now allows installers to view and update settings remotely at a click of a button. This feature allows users to save time by avoiding the need to go to site to change just a few settings.

Hence, this document will cover the steps required to successfully view and update the settings on the inverter using the online web portal.

Introduction:

The **Settings** feature option can be found in the main menu under “**Advanced**”. Selecting it will allow the user to search for the plant which needs to be checked or updated.

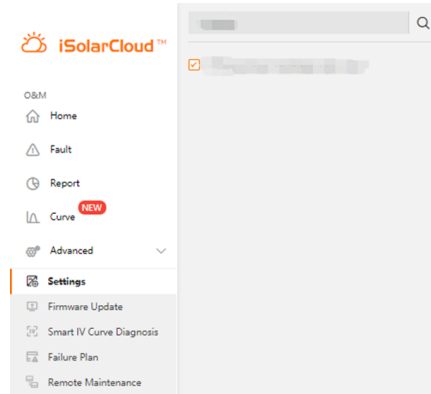


Figure 1 Settings & Plant Search

On selecting the plant, the relevant device and type can be selected on the right. Please use the following guide with respect to Figure 2 to locate the inverters:

- Grid-Connected Inverters – **Inverter**
- Hybrid Inverters – **Energy Storage System**

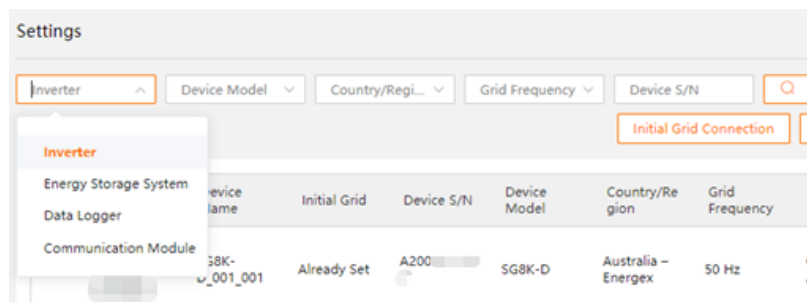


Figure 2 Device Type

Once the type has been selected, the relevant device must be selected in order to proceed further.

The Settings feature on iSolarCloud has three main parameter menus (Figure 3):

- **Initial Grid Connection**
- **Common Parameter Setting**
- **Advanced Parameter Setting**

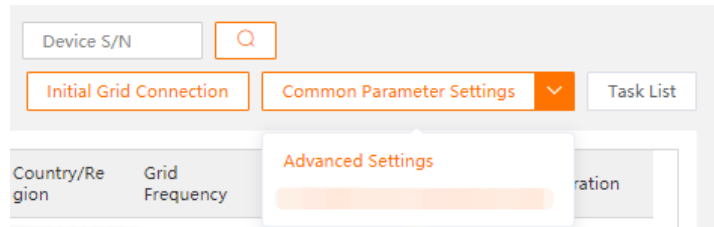


Figure 3 Parameter Menus

Initial grid connection allows the inverter to be initialised by setting the country setting whereas each of the **parameter settings** can be used to successfully view and change general settings on the inverter. The information available under these settings can vary depending on the model of the inverter.

Viewing the Settings:

Before any settings can be changed, it is important to know the existing set values. This can be done using the “**Inverter Parameter Query**” option under **Operation** (Figure 4).

The first two options under operation correspond to common and advanced parameter query respectively and the clock symbol can be used to check the task history and status for that specific device.

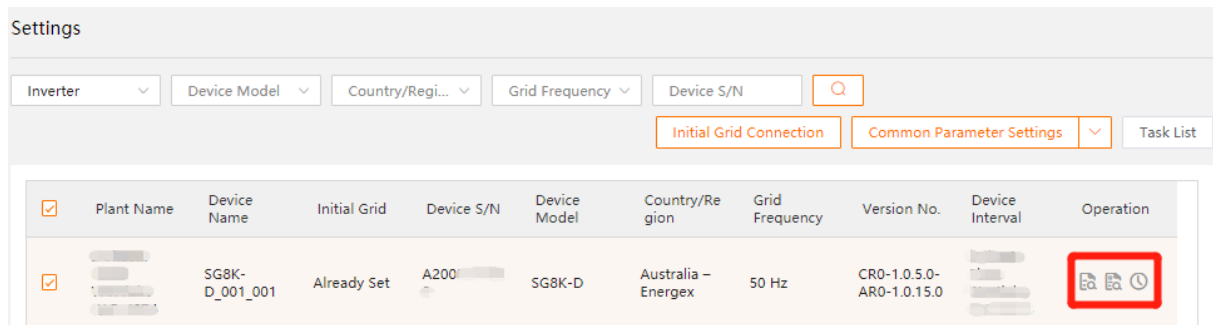


Figure 4 Parameter Query under Operation

Inverter parameter query can also be performed under the **Parameter Settings** menu. On opening either the common or advances parameter settings, the option will be on the top right (Figure 5).

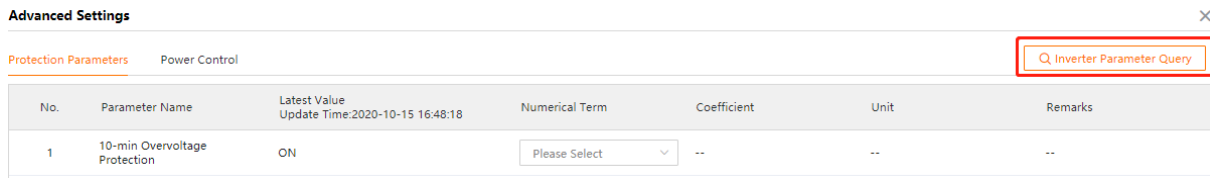


Figure 5 Parameter Query under Settings Menu

On selecting any of the parameter query options, a prompt will pop up where a task name and a valid period can then be set. The valid period is the time after which the query will timeout if it is not complete.

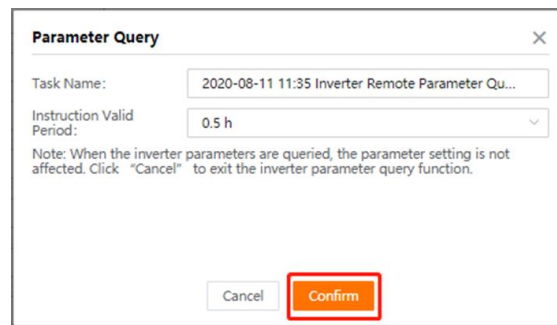


Figure 6 Task Name & Valid Period

Clicking confirm will begin the query which can take up to a few minutes, depending on the number of parameters requested from the inverter.

On completion, the **“Latest Value”** under the parameter menu will update and display the latest parameters read from the inverter. For viewing parameters which have multiple settings to them, a sub-menu will appear on selecting the relevant setting (Figure 7).

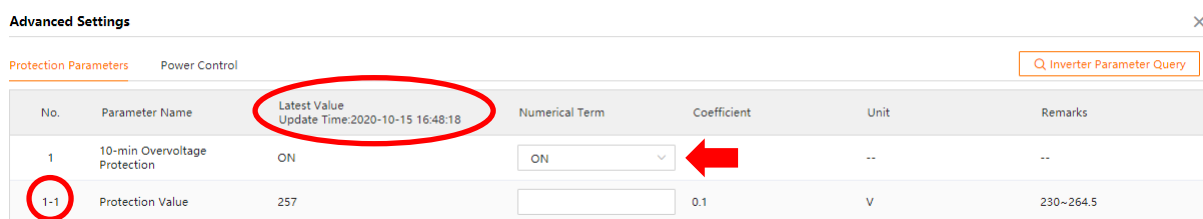


Figure 7 Latest Value and Sub-Menu

Changing the Settings:

Once the settings have been viewed, they can then be amended as required. This can be done using the two parameter menus namely **Common** and **Advanced Parameter Settings**.

Similar to viewing settings, the sub-parameters for a setting can be viewed changed by selecting the relevant setting. Simply input the value or setting you would like to adjust the parameter to and click **Apply Settings** down at the bottom.

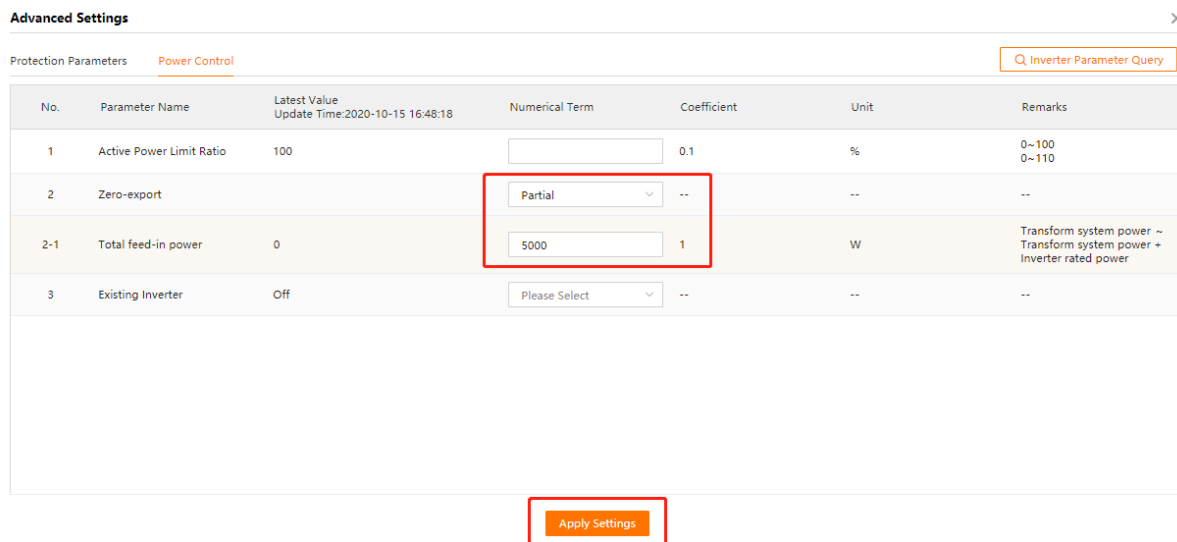


Figure 8 Changing Settings

Please note, only settings that have been entered will be changed.

To proceed further with the settings, a password must be entered. This password is the same as **the login password for the account**.

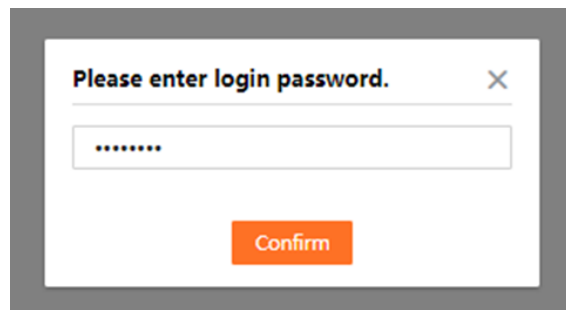


Figure 9 Login Password

A task name and a valid period can then be selected. Clicking “**Confirm**” will initiate the settings.

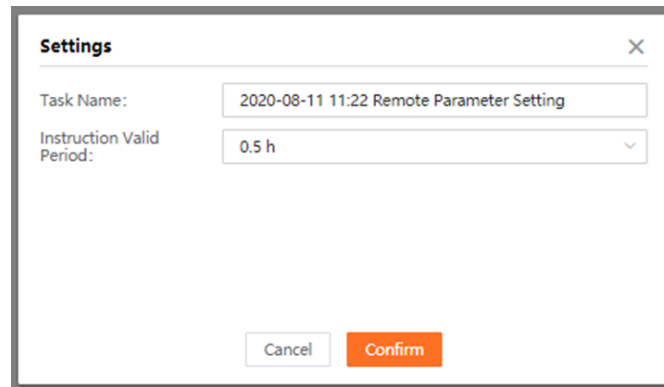


Figure 10 Task Name & Valid Period

The status can then be checked using the “**Clock Option**” under operation. This will allow the user to view the set and read back values.

View Task History

SG8K-D_001_001

Plant Name: [] Device Interval: [] Inverter Model: SG8K-D

[2020-07-07 ~ 2020-07-07] [🔍]

No.	Execute the Instruction	Operator	Instruction Issued Time	Set Value	Read-back Value	Execution Result
1	Total feed-in power	[]	2020-07-07 16:16:53	5,000	5,000	Successful
2	Zero-export	[]	2020-07-07 16:16:53	Partial	Partial	Successful
3	Protection Value	[]	2020-07-07 16:09:32	--	257	Successful
4	10-min Overvoltage Protection	[]	2020-07-07 16:09:32	--	ON	Successful

Figure 11 View Task History

To watch a step by step guide on viewing and changing the inverter settings remotely, click on the video link below:

- [iSolarCloud Remote Settings](#)

If you have any questions for remote setting features, please contact Sungrow Service Department on 1800 786 476 or email to service@sungrowpower.com.au.