

## Two Inverters on 1-Phase Supply and Setting Existing System

### Disclaimer

The material in this document has been prepared by Sungrow Australia Group Pty. Ltd. ABN 76 168 258 679 and is intended as a guideline to assist solar installers for troubleshooting. It is not a statement or advice on any of the Electrical or Solar Industry standards or guidelines. Please observe all OH&S regulations when working on Sungrow equipment.

With the new Crystal G2 Grid inverters and Premium versions (SG2K-S, SG2K5-S, SG3K-S, SG3K-D, SG5K-D and SG8K-D), you can set the export control and also include an existing system in the settings. This enables the G2 inverter to limit export, even if there is another PV system on the same phase.

**Please note this document for solar installers only.**

This is made possible by connecting a Sungrow Energy Meter at the main switchboard. It must be at the main switch, and on the same phase as the inverter (s).

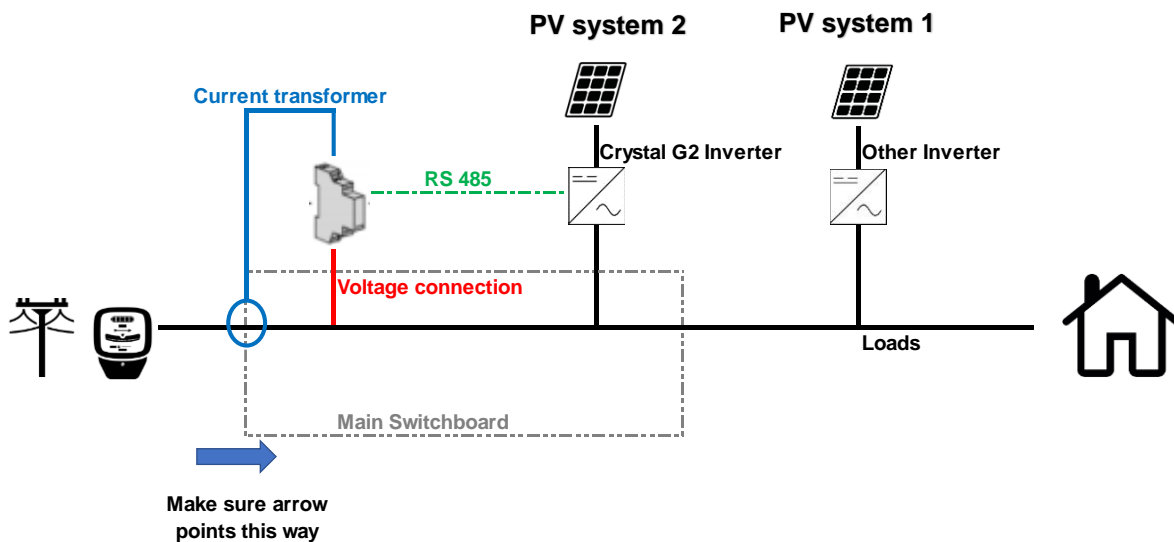


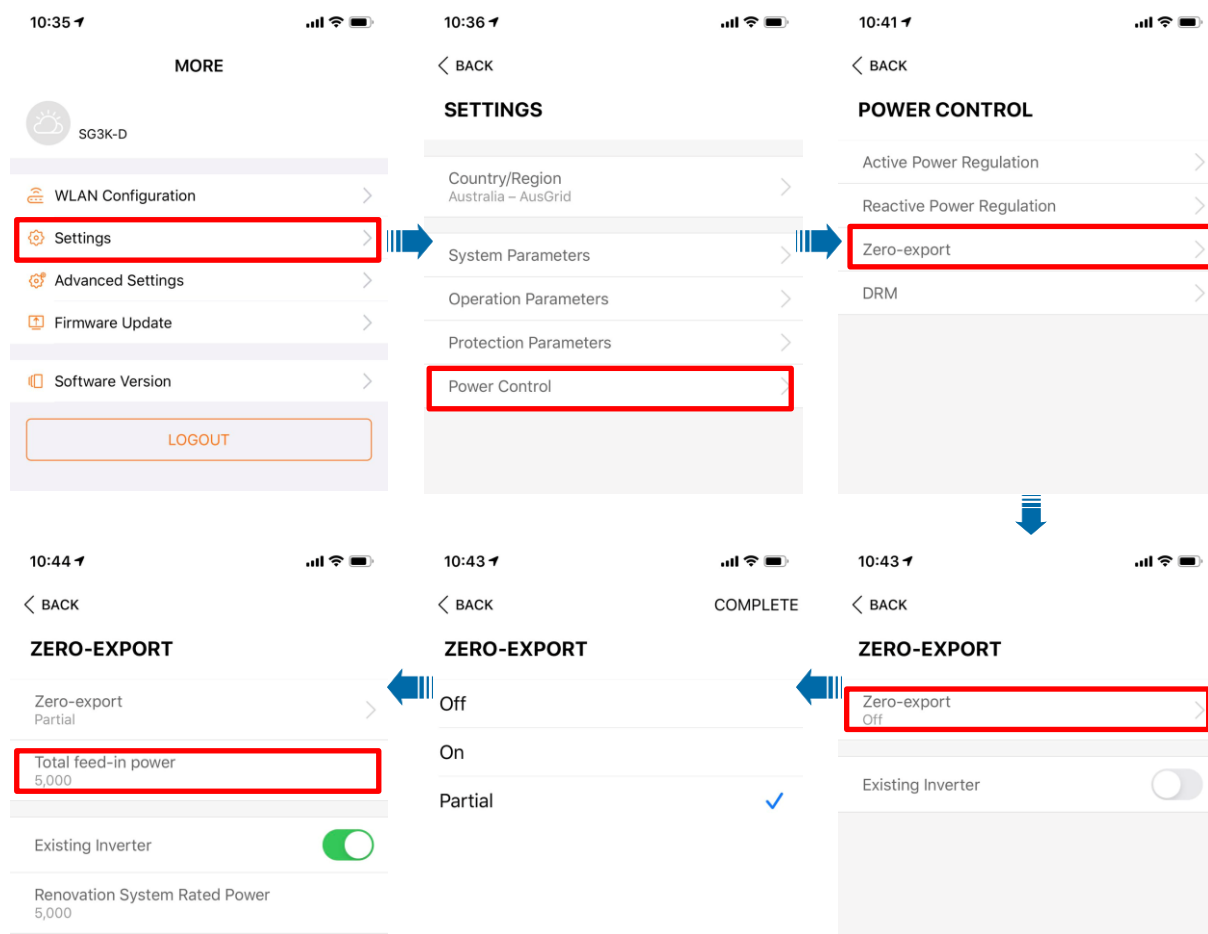
Figure 1 Sungrow Crystal G2 inverter with an existing system (S100 as an example)

When the Crystal G2 inverter is installed with an existing inverter, the **existing solar system will act as System 1** and the **Crystal G2 will act as System 2** (Figure 1). Based on the size of the existing system export limit can be set on the Crystal G2 inverter up to 8 kW. For two Crystal G2 inverters on the same phase, **only one Sungrow energy meter needs to be installed** (i.e. for system 2) and the **'zero export'** setting on that inverter needs to be set accordingly.

Using iSolarCloud APP to adjust export control and existing system settings:

**Setting Export control:**

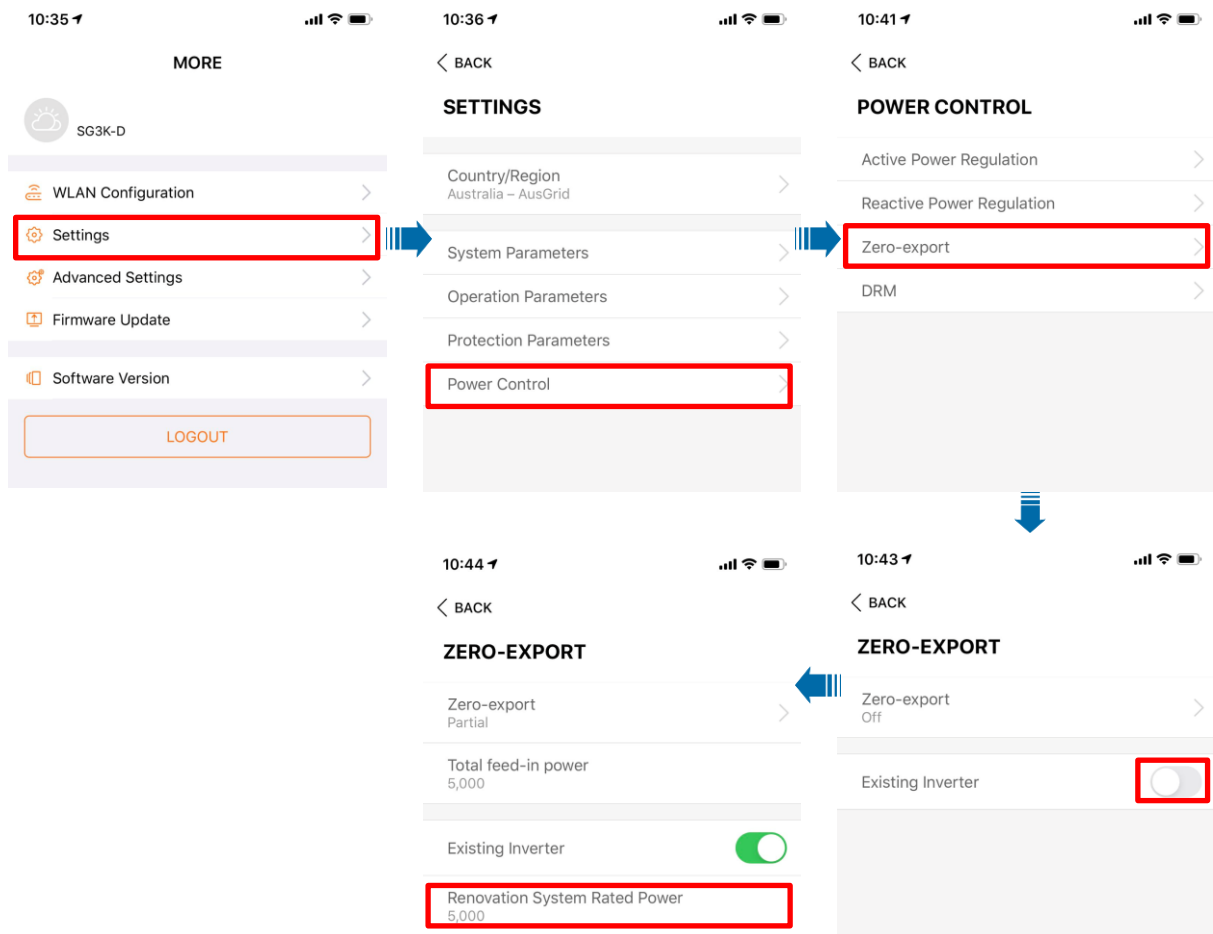
Access the inverter through Local Access ->WLAN -> Login inverter with the account "admin" and password "pw8888"->Go to "Settings" -> "Power Control" -> "Zero-export" -> Turn zero-export "On" or select "Partial" if there is a limit -> Put the allowed feed-in power in "Total feed-in Power (kW)".



**Setting Existing System:**

In the case where there is another inverter on the same phase, it must be set in the settings.

To set the Existing system setting on the inverter please Access the inverter through Local Access -> WLAN -> Go to “Settings” -> “Power Control” -> “Zero-export” -> Turn on “Existing Inverter” -> Put the existing inverter rated power in “Renovation System Rated Power (kW)”.



Using inverters' panel to adjust export control and existing system settings:

### Setting the Export control:

To set the zero-export setting on the inverter please navigate to **Main Menu** → Select **Setting** → Enter the password '**135**' → Select '**Zero Export**'

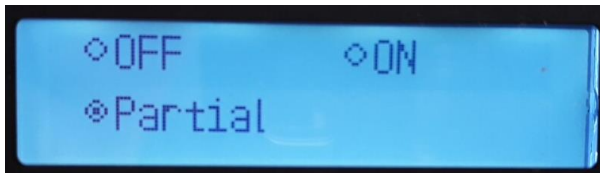
From the settings menu (password 111), scroll to "Zero Export"



(If previously set, use password 135)

The export can be set to the following:

- 'OFF' – will export all of the available PV production
- 'ON' – will not allow this G2 inverter to export (has no control over any other inverter)
- 'PARTIAL' – will set the export at the selected watts



When 'Partial is selected, you can enter the max export in watts from this and another inverter.



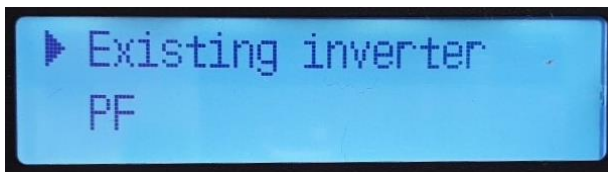
\*Range is dependent on Inverter capacity

**Setting for Existing System:**

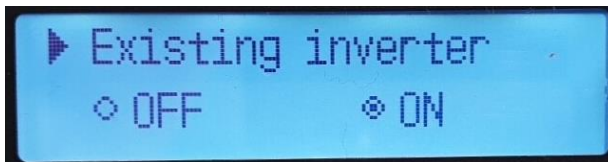
In the case where there is another inverter on the same phase, it must be set in the settings.

To set the Existing system setting on the inverter please navigate to **Main Menu** → Select **Setting** → Enter the password '111' → Select '**Existing inverter**'.

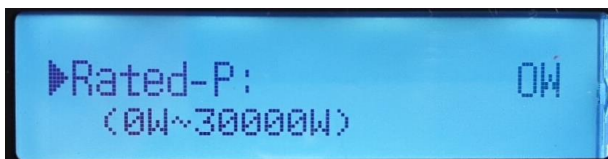
Scroll through the settings menu to "Existing Inverter"



Enter and select "ON"



Set the existing inverter AC power in watts



**Make sure you save your settings.**

If the issue persists after following above procedures, please take photos testing on site and contact Sungrow Service Department on 1800 786 476 or email to [service@sungrowpower.com.au](mailto:service@sungrowpower.com.au), Monday- Friday 9am - 5pm (AEDT).