

iSolarCloud Local Access Methods

Disclaimer

The material in this document has been prepared by Sungrow Australia Group Pty. Ltd. ABN 76 168 258 679 and is intended as a guideline to assist solar installers for troubleshooting. It is not a statement or advice on any of the Electrical or Solar Industry standards or guidelines. Please observe all OH&S regulations when working on Sungrow equipment.

iSolarCloud app comes with a local access feature which allows users to connect to the inverter directly, and access real-time data and settings through the app. This feature is specifically handy for the new range of inverters without an LCD display however, it can also be used with other inverters with a screen as well.

Different inverters come with different communication devices hence, the access method may differ from model to model. There are mainly two ways to login locally i.e.:

- **WLAN**
- **Bluetooth**

Please refer to the table below while for the correct access method.

Table 1: Access Method

Inverter / Dongle Model	Access Method
eShow V23 (External Screen Module)	WLAN
Wi-Fi Dongle – V24/25/31	WLAN
Wi-Net Dongle	WLAN
Three-Phase Residential (M/MT series)	Bluetooth
Three-Phase Commercial (CX series)	Bluetooth

Note: Please note that the new Three-Phase RT inverters do not have a Bluetooth function

Moreover, local access requires login details which are as follows:

Table 2: Login Details

	End-User	Qualified Installer / Technician
Account	user	admin
Password	pw1111	pw8888

Down below are the steps on how to access local access for the different devices.

Local Access

“Local Access” can be found under “More” or on the bottom right of the home page.

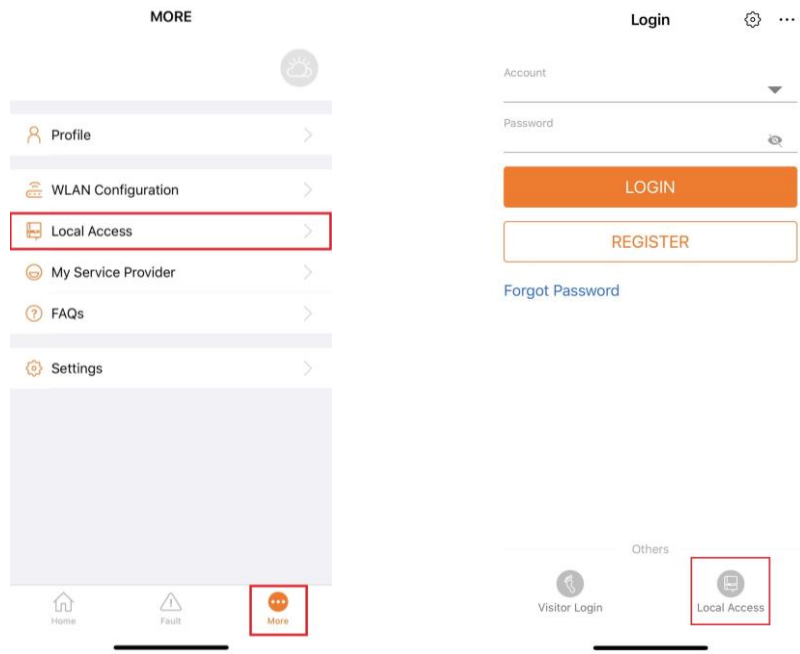


Figure 1 Local Access

The app will then be directed to the local access page. Here, the access method can be chosen.

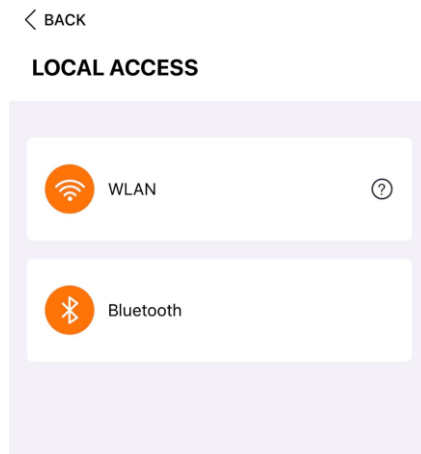


Figure 2 Local Access Method

WLAN Access Method

For WLAN access, the phone must be connected to the **SG-xxxx** Wi-Fi. This can be done in the phone settings.

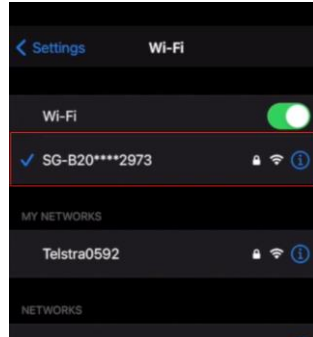


Figure 3 WLAN Connection

For the regular **Wi-Fi dongles (V24/25/31) and eShows**, the SG network should be automatically visible however, the network may request for a password. For this, the password is simply the **SN of the dongle**.



Figure 4 Dongle SN

For the new generation Wi-Net dongles, the SG Wi-Fi is hidden for security reasons. This can be enabled by clicking the button on the dongle **three times**.

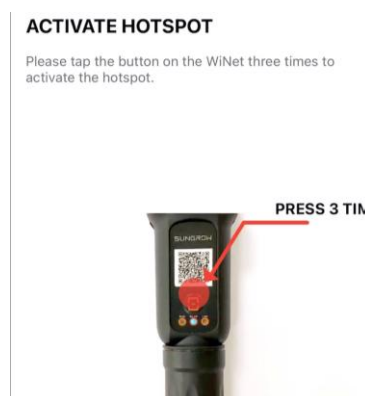


Figure 5 Wi-Net Button

Once connected, head back into the app and click on WLAN. If requested, select the SN of the corresponding inverter. Once selected, the SN of the inverter will be visible on the top right with a tick next to it. You can then proceed to login.

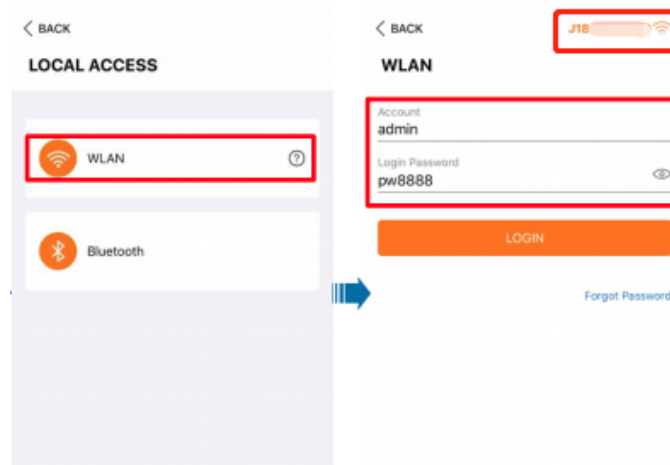


Figure 6 WLAN Login

Bluetooth Access Method

Before proceeding with Bluetooth access, please ensure the phone's Bluetooth functionality is enabled.

Selecting Bluetooth will prompt a list of nearby inverters. Simply select the **SN of the inverter** you wish to connect to. Once selected and connected, the SN will be visible on the top right with a tick next to it. You can then proceed to login.

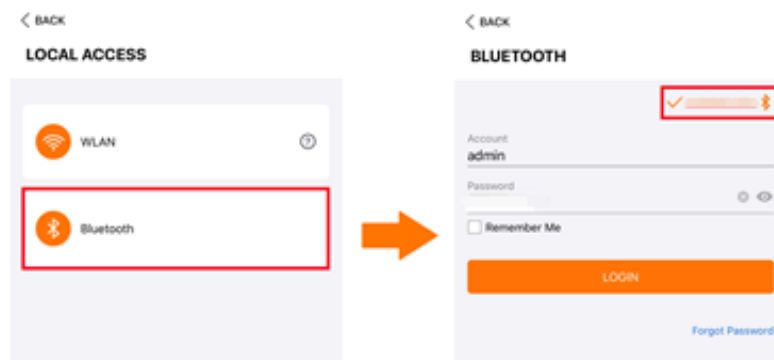


Figure 7 Bluetooth Login

If the issue persists after following above procedures, please take photos testing on site and contact Sungrow Service Department on 1800 786 476 or email to service@sungrowpower.com.au.