

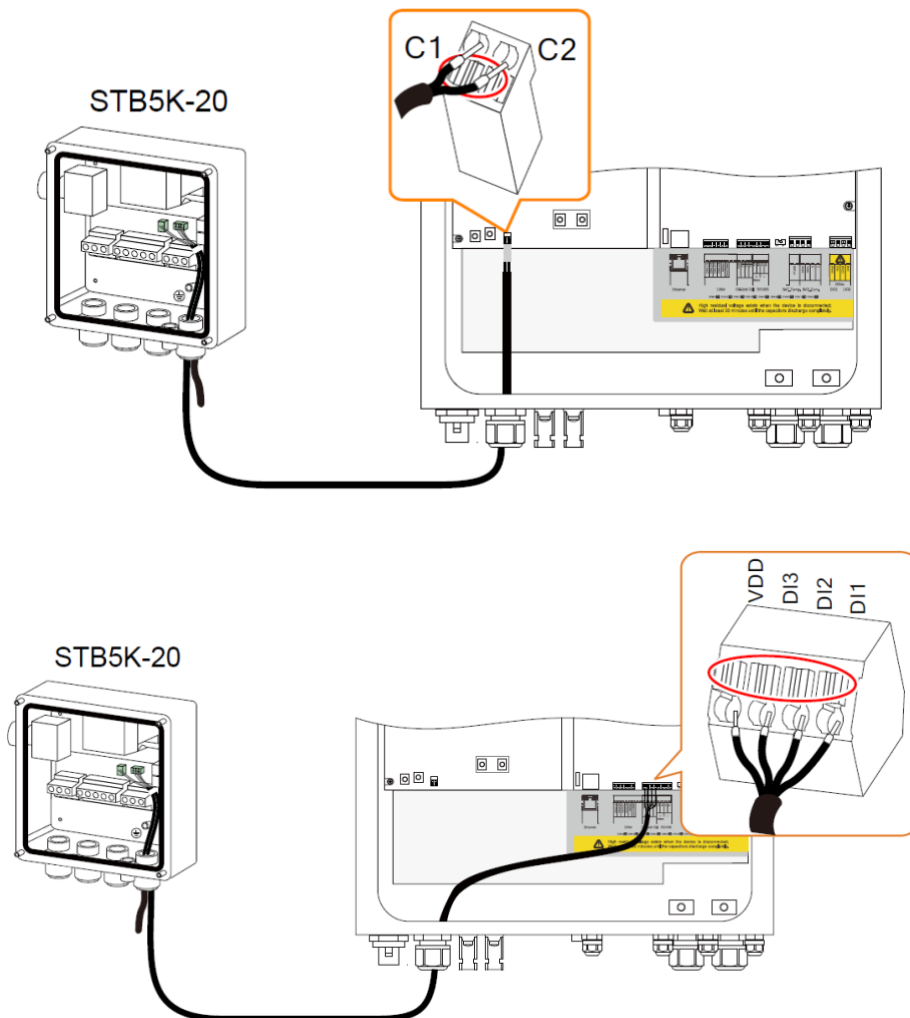
Error 062 – EPS Communication Issue

Disclaimer

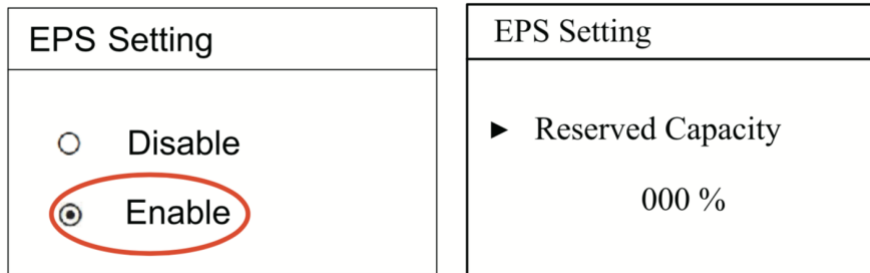
The material in this document has been prepared by Sungrow Australia Group Pty. Ltd. ABN 76 168 258 679 and is intended as a guideline to assist solar installers for troubleshooting. It is not a statement or advice on any of the Electrical or Solar Industry standards or guidelines. Please observe all OH&S regulations when working on Sungrow equipment.

This error may occur if the wiring is not correct, or the EPS function has not been enabled. Please follow this procedure to test. This document uses an SH5K-20 inverter as an example for explanation.

1. Check that the VDD, DI1, DI2, DI3 and C1 and C2 cables are all connected.

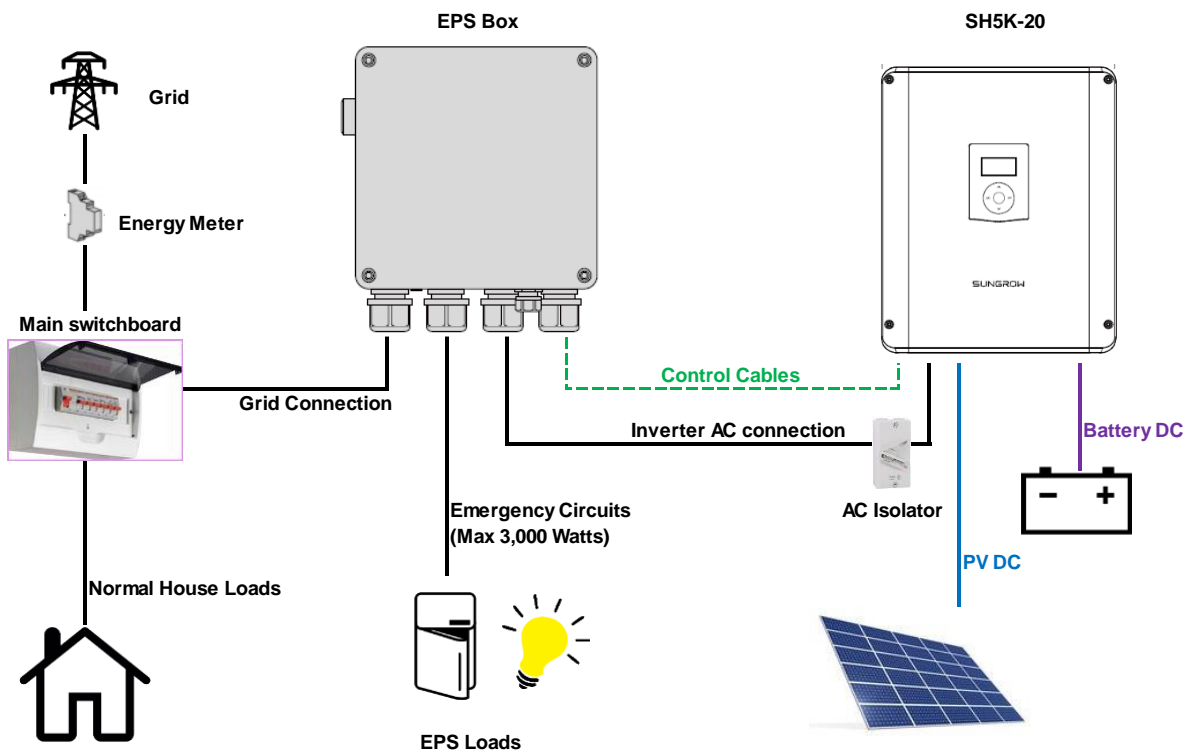


2. Check that EPS is 'Enabled' in the setup menu.

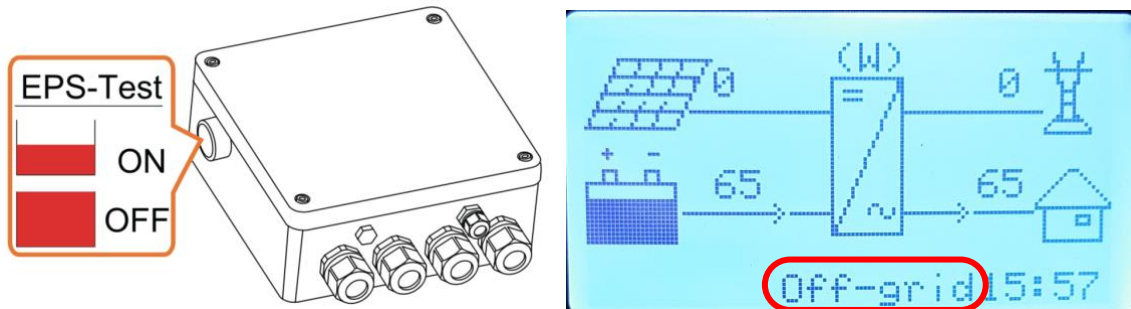


*Set 'Reserved Capacity' as required and default setting is 0%

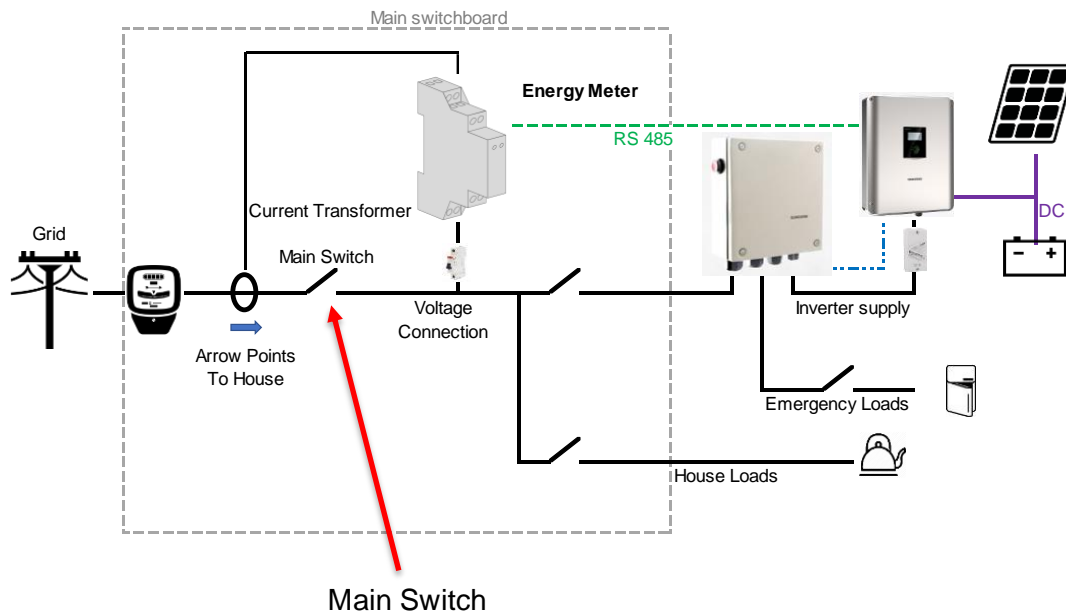
3. Make sure the AC cables are correctly installed (Max load on EPS circuits is up to 3,000 Watts)



- To test the off-grid function, press the red test button on the top left-hand corner of the STB5K-20 unit. This simulates blackout but without interfering with the customer's normal loads. Press again to release.



- Alternatively, turn off the main switch in the main switchboard where the Energy Meter is located (not the solar supply main switch or the main switch in a sub board). If you cut power to the inverter / EPS but not the Energy Meter, you may get a 062 fault or the system may 'cycle' between startup and off-grid.



If the fault persists, please take photos testing on site and contact Sungrow Service Department on 1800 786 476.