

# WiNet Dongle Differences

## **Disclaimer**

*The material in this document has been prepared by Sungrow Australia Group Pty. Ltd. ABN 76 168 258 679 and is intended as a guideline to assist solar installers for troubleshooting. It is not a statement or advice on any of the Electrical or Solar Industry standards or guidelines. Please observe all OH&S regulations when working on Sungrow equipment.*

The new three-phase Sungrow Inverters come with a new dongle i.e., WiNet. This dongle comes with both Wi-Fi and Lan capabilities. This document will cover how to correctly use the WiNet dongle to complete plant setup, use local access and perform WLAN configuration when required.

## **Plant Setup and WLAN Configuration**

Unlike the other dongles (V25/V31), the step to connect the inverter to the home internet differs for the WiNet dongle. There are two different stages where this would be required. Firstly, during plant setup and secondly, if the connection between the inverter and home internet drops out.

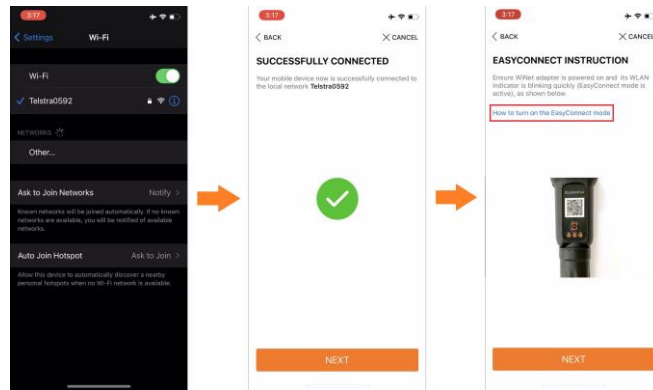
### **Plant Setup**

With the new Wi-Net dongle, there is no longer a need to connect to the SG Wi-Fi of the dongle to connect the inverter to the home internet. To view the full step by step guide for plant setup using WiNet, please check the link below:

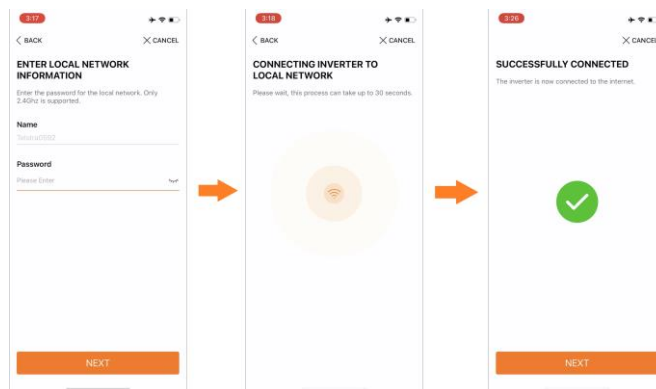
- [WiNet configurattion\\_202101](#)

During plant setup, after the dongle QR code is scanned and WLAN method is selected, you will be required to connect to a local network to proceed. For this, you must connect your device to the **home internet**.

Once connected, you can proceed with the **EasyConnect** Mode. To enable this, the button on the dongle must be **clicked once**. The demonstration can be accessed by pressing "How to turn on EasyConnect Mode".

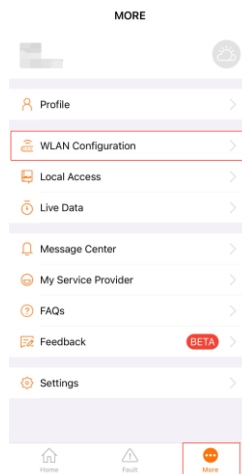


The app will then request to put in the **password of the home internet**. Once entered, the app will connect the inverter to the internet and a confirmation will pop up. The rest of the steps can be configured normally.



### WLAN Configuration

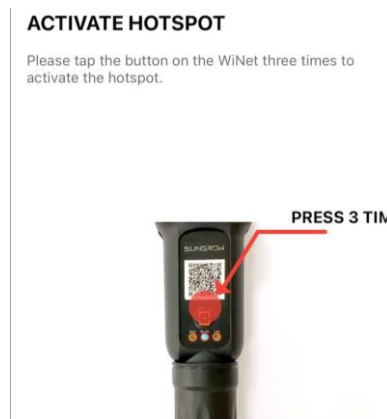
If there is ever an internet dropout, the Wi-Fi can be reconfigured through WLAN configuration. The procedure for WLAN configuration is the same as mentioned above.



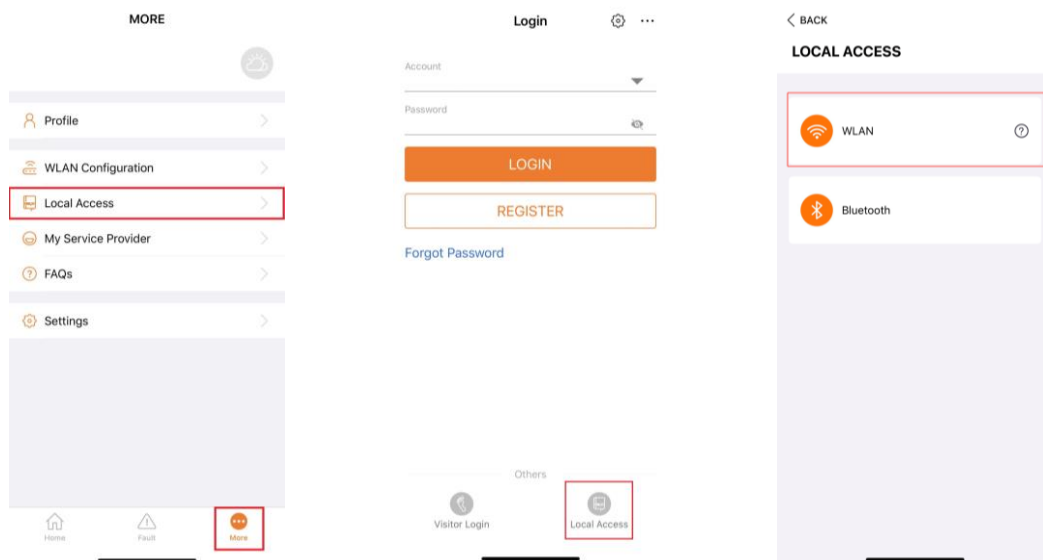
## Local Access

The new 3-phase inverters do not have a screen hence, all settings must be done via iSolarCloud local access. For this, the device must be connected to the **SG-xxxx** Wi-Fi however, for increased security, the Wi-Fi is hidden on the WiNet.

**This can be enabled by clicking the button on the dongle three times.**



Once complete, the SG-xxxx Wi-Fi will be available in the Wi-Fi list and local access feature can then be utilised.



If the issue persists after following above procedures, please take photos testing on site and contact Sungrow Service Department on 1800 786 476 or email to [service@sungrowpower.com.au](mailto:service@sungrowpower.com.au).